

**men of the trees**



**annual report 2011**

## Acknowledgements

Men of the Trees (MOTT) gratefully acknowledges the following persons and entities for providing the land on which our branches operate:

Chris Fyfe and family  
East Perth Redevelopment Authority  
Rockingham Golf Club / City of Rockingham  
Shire of Dowerin  
City of Greater Geraldton

MOTT gratefully acknowledges the following major donors / sponsors / funding bodies:

Bowra & O'Dea Funeral Directors  
Community Arts Network WA (Catalyst)  
Department of Agriculture, Fisheries and Forestry  
Department of Education, Employment and Workplace Relations  
Department of Environment and Conservation  
Department of Environment, Water, Heritage and the Arts  
Department of Families, Housing, Community Services and Indigenous Affairs (FAHCSIA)  
Lotterywest  
Shire of Dowerin  
Australian Ethical Investment

MOTT gratefully acknowledges the pro bono professional services provided by:

Bill Chambers	Chartered Accountant
Fiona Grgich	McLeods Solicitors
Josh Byrne	Environmental design consultant
Gary Davey	Building Consultant and Management

## Contents

### Section 1: REPORTS

President and Treasurer's Reports.....	1
Chief Executive Officer's Report.....	2
Management Chart .....	3
Business Development Manager.....	4

### Branch Reports

• Administration Centre.....	5
• Front of Office	
• Whiteman Park Children's Forest	
• Bowra & O'Dea Memorial Groves	
• Peel / Dowerin and Regions.....	6
• Perth City Farm.....	7
• Revegetation Centre.....	8
• Rockingham / Kwinana Nursery.....	9
• St Barbe Grove Nursery.....	10
•	

### Affiliate Report

• Carbon Neutral Ltd.....	11
• Shirley Fyfe Scholarship and PEGF.....	11
• Shirley Fyfe Honours Scholarship	

### Section 2: MANAGEMENT AND PERFORMANCE

Vision, Mission, Principles and Goals.....	12
--	----

#### Goal One:

2011 Plantings.....	13
• Summary of Plantings and Seedlings grown.....	14
•	

#### Goal Two:

• Research.....	14
• Presentations, Workshops, Shows.....	15

#### Goal Three:

• MOTT Membership and Volunteers Hours.....	16
•	

#### Goal Four:

• Management & Planning.....	16
•	

### Section 3: ACKNOWLEDGEMENTS

• Executive Board.....	17
• Committees	
• Branch Committees	

### Section 4: FINANCIAL STATEMENTS..... 18

Once again it has been a tough year for those of us focussed on looking after our beautiful planet, but we have also had our share of significant achievements.

Our most exciting achievement for 2011 was launching our *Putting it back, together* program where we are working with farmers in the Morbinning catchment close to Beverley WA. We had several plantings in the catchment over the winter (52,500 seedlings planted) and we look forward to increasing the number of plantings every year, to combat the salinity and erosional issues in that area. Restoring that balance will increase the productivity of the farms, creating a "win-win" for all those involved as well as ultimately addressing climate change.

Of equal excitement is the joint venture with the City of Greater Geraldton, who have awarded us the right to develop a community nursery and assist with the re-greening of Geraldton through the One Million Trees program.

A highlight of our year was a visit from Ms. Ann-Marie Barnes the grand daughter of St. Barbe Baker the founder of Men of the Trees. Ann-Marie is working on a documentary of her grand father's monumental achievements which focussed on the preservation and rehabilitation of forests all over the world. St Barbe Baker was a visionary who realised that if we didn't look after the ecology of this planet then the consequences would be catastrophic.



2011 was also the United Nation's International Year of Forests. Let every year celebrate the importance of trees in our life. May MOTT continue to promote an awareness of the role of trees and understory in the environment and thereby their contribution to the welfare of mankind.

Here in Australia I embrace the carbon tax and hope that it will make everyone think about how they consume the world's non-renewable resources. A positive part of the carbon tax is the Carbon Farming Initiative (CFI) which we anticipate will drive a great deal of investment into biodiversity plantings.

Last but by no means least I must thank our volunteers who do the "hard yards" here in Western Australia often under harsh weather conditions to ensure that many hands make light work. You are the unsung heroes of the environment and I look forward to joining the rest of the world in singing your praises one day soon.

Christian Marriott



## Treasurer's Report

In my report last year I noted the significant grant income which served to inflate the results for the year as most of the associated expenditure was of a capital nature. I also noted that we could expect a reduction in the surplus for the 2011 year.

The broader economy and uncertainty in the carbon offset and compliance market has had an impact on the operations of Carbon Neutral during the year and this has adversely affected the operations and profitability of the MOTT Revegetation Centre.

There has been a change of management team at Perth City Farm with an accompanying change in focus and this has had an impact on the results of Perth City Farm for the year. The effect on the profitability of Men of the Trees has been much greater than expected and a significant loss has been reflected for the year.

The financial position of Men of the Trees Inc at year end remained strong with significant net assets. However, the losses incurred at Perth City Farm have continued since year end and these losses have significantly affected the financial position of Men of the Trees Inc. The Perth City Farm Café has now ceased trading and will be leased to an external operator. Steps are being taken to rein in expenditure and expand sources of income. At the same time expenditure is being reviewed across Men of the Trees Inc to ensure unnecessary expenditure ceases and other expenditure is deferred where possible. Notwithstanding these steps the next twelve months are expected to be very difficult financially for Men of the Trees Inc.

Bill Chambers

Fundamentally, Men of the Trees is all about engaging with people to grow and plant trees. And how we go about this centres on the activities of our branches – maximising the number of seedlings grown and planted each year to contribute to healthy and sustainable landscapes; promoting the care of the earth and health through permaculture and organic education and training; becoming a leader in environmental education specialising in revegetation, food and community engagement.

Sincere thanks to all our branches for successfully promoting these aims.

Sandra Krempf, our previous CEO paved the way for good governance and procedures – and we are the better for it. Thank you Sandra.

Our Finance Manager, Tracey Salmond, has taken on a demanding role. Firm in resolve, Tracey provides continual improvements to accounting and financial reporting. Equally, Carol Lewis has maintained MOTT's book keeping duties as well keeping a watchful eye on main office activities. She is capably assisted by office volunteers, Ruth, Bee, Margaret and Freda each day of the week.

New banners and brochures were presented at a range of events so that we could be heard and seen. And our marketing plan, developed earlier, was implemented. I am pleased to say that MOTT and Carbon Neutral also worked well together. Our sharing of an article in a special lift-out of The West Australian to celebrate World Environment Day in June was commendable.

2011, however, has been a year of great change - and with that change, a degree of uncertainty. Perth City Farm, the Revegetation Centre and Administration Branches have embarked on a range of programs in accordance with our 2010 – 2015 Strategic Plan. As always, funding for these programs has offered many challenges. Options for identifying and attracting funds in the short and long term are being pursued and close monitoring of these programs will be required to ensure they are a success.

The year was also noted for the high attrition rate of MOTT Board members. Thankfully this is now being rectified. I am looking forward to working with Branches on the following programs:

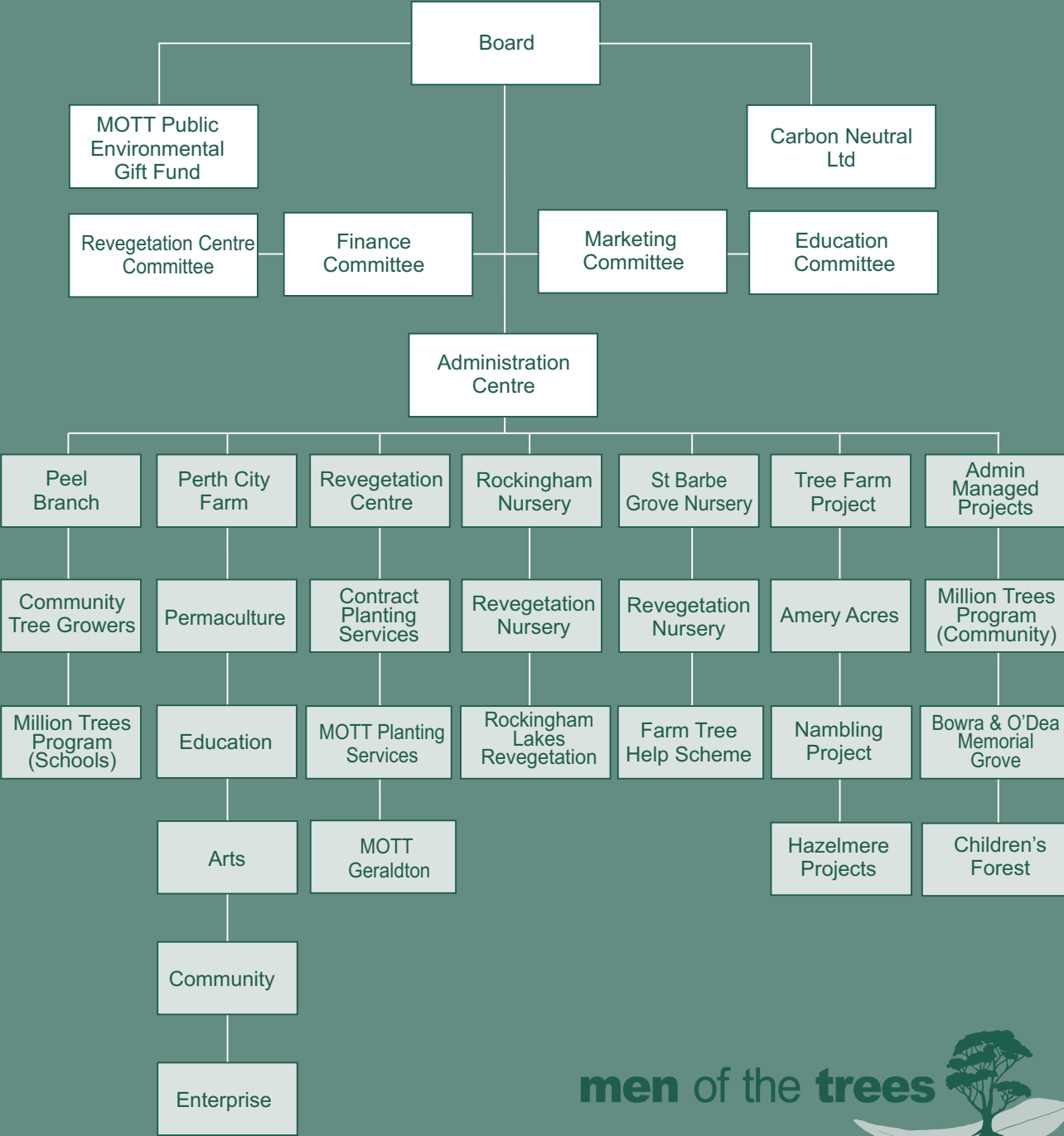
- Encouraging a sustainable outlook by strengthening the role of education through MOTT activities;
- Developing a Memorandum Of Understanding with all MOTT branches; and
- Identifying and seeking funding streams to support programs for the short and long term

How MOTT is perceived by the general community is an important measure of our role as a service group. It helps to define and promote our mission – bringing people together to grow and plant trees and to achieve healthy, productive, sustainable landscapes.

Cliff Morris



# Management Chart



The part-time Business Development Manager role was created in March 2011 from the previously completed marketing plan. In the months that followed, I got involved in many different projects while assessing issues that affected MOTT's ability to develop as an organisation.

In preparation for Envirofest on 1st May 2011 at Whiteman Park, a new style guide was developed for MOTT, in consultation with Sandra Harms of Red Brook Art, to be applied to all marketing material and external communications. The style gives MOTT an updated, fresh and colourful image. The new style has been implemented in MOTT banners, a general information brochure and the look of the MOTTO newsletter. Business cards, a new letterhead and email signature are soon to be rolled out across the organisation. We have used the style in developing the Farmscape Services brochure which is currently in circulation.

The need for a better IT service provider was identified with a more up-to-date system to enable MOTT to be more efficient and effective in their work. An application for an \$80,000 Lotterywest grant for a new IT system has been submitted. This is currently being considered.

In reading through the MOTT Strategic Plan 2010-2015, I identified that MOTT needed to pursue two out of its four key goals, namely developing 200 new champions and becoming a leader in environmental education. MOTT has done lots of good work in engaging the community in the past and, in looking to the future, I proposed that these projects should be revitalised, revised and added to existing work such as Wheatbelt and urban plantings. In September 2011, I submitted a strategy paper which has been reviewed by the

MOTT Board for a program called The Greening Challenge – an umbrella concept to engage the public and direct them to various activities to involve them in the growing and planting of trees, and to educate them about the importance of trees. I also applied for a Department of Environment and Conservation Community Grant for \$25,000 to further the Million Trees Program, putting nurseries in schools, for which I was successful.

In July 2011 I was joined by a part-time Volunteer Co-ordinator, Denise Hogan. A former volunteer at Men of the Trees herself, she has taken on the role of developing volunteer services throughout the organisation. She has liaised with Volunteering WA, developed a volunteer induction procedure, advertised for and engaged new volunteers for all kinds of tasks at MOTT, and developed relationships with employment agencies to provide more volunteers under the Work For The Dole program which provides a payment to MOTT in addition to the extra pairs of hands. Denise has also been very active in personally attending events with a MOTT stand and usually several MOTT volunteers. The events have provided valuable leads and contacts with various organisations and individuals who are interested in working with MOTT.

Much has been achieved in 2011 and there are many challenges ahead for 2012. I look forward to tackling them with excitement, enthusiasm and a sense of direction and purpose.

**Emily Alford**  
*Business Development Manager*



The Administration Centre at Hazelmere juggles the book keeping, payroll, banking, accounts, governance, membership, volunteer coordination, publications, events, marketing, sponsorships, and so on. 2011 was a busy year, as the following relates:

## **Bowra & O'Dea Memorial Groves**

Bowra & O'Dea is MOTT's main and long standing sponsor. The Bowra & O'Dea Memorial Groves program is now in its 15th year.

Through the Bowra & O'Dea sponsorship, new groves are planted each year providing a reflective place for families whilst also increasing much needed biodiversity in the landscape. Since 2008, memorial groves have been created each year at Beckenham Reserve through an arrangement with SERCUL (South East Regional Centre for Urban Landcare) and the Western Australian Planning Commission.

There are 14 Groves around Western Australia as part of this project which has been sponsored by Bowra & O'Dea.

## **Whiteman Park Children's Forest**

We have 41 new subscriptions for 2011. 3000 seedlings were planted at the Children's Forest on Sunday 12 June, over 120 Mums, Dads and Kids met at the Whiteman Park Children's Forest in glorious sunshine to plant 3,000 sturdy and healthy native plants grown by our own St Barbe Nursery.



We had our dedicated volunteers there of course who provided home made

cakes, barbecued goodies and loads of encouragement.

The partnership between Whiteman Park and Men of the Trees is an important one.

The idea of a Children's Forest came from MOTT – a place where children can come to learn about the importance and beauty of trees and the natural environment as they watch their forest grow and flourish as they do – a living link with the earth.



## **Front of office**

Many thanks to Carol who capably runs book keeping and general office duties, ably assisted by volunteers Ruth, Bee, Freda and Margaret.

## **Business Development**

Events, volunteer recruitment, banners and brochures and promotional opportunities for MOTT are some of the activities undertaken, thanks to Emily and Denise.



This year the Gordon Reid Lodge at Amery Acres has been used for a number of events such as April and August for Master Tree Growers courses, two separate weekends for Curtin University students, a MOTT training session, and accommodation during the Dowerin Field Days.

A prisoner work camp has been built adjacent to Amery Acres and some of the workers were provided with accommodation at Amery Acres. During the Master Tree Growers course an area was used as a demonstration of direct seeding of trees.

A solar desalinator was officially unveiled by MLC Alison Xamon who was assisted by MLC Mia Davies. Our own member Diane Hatwell representing St Barnabas Anglican Church blessed the desalinator and its intended benefit.

Barrie and Sallie Oldfield arranged working bees at Nambling salt flat and the Curtin Uni students mulched many of the trees at Nambling. A ceremonial tree planting took place with Hon Mia Davies planting a Dowerin Rose (euc pyriformis). Mia became just as wet, cold and muddy as the rest of us.

Letters have been sent to Perth based organisations, such as City Farm, inviting them to stay a few days at Amery Acres to help broaden city-rural relationships. A continuing and possibly closer liaison will be made with organisations promoting growing and utilisation of oil mallees, sandalwood, indigenous food plants and trees, rare and endangered indigenous flora species.

Many trees have died during the recent drought at Amery Acres and throughout the Wheatbelt, even at King's Park. Some of the dead trees at Amery Acres will be cut for firewood to supply the Lodge, this will also enable replanting of a more durable species.

Over the years that MOTT has used Amery Acres, we have compiled a list of the birds observed on the property. It is interesting to note that the planting of trees and shrubs over the last twenty years has encouraged habitat for the small insect eating birds.

Adrian Price - Chair-Dowerin & Regions



## Peel

Once again it gives me much pleasure in reporting on our activities during a busy and very productive year. Peel Branch had one of its busiest years ever with approx. 35,000 plants grown by its members for the City of Mandurah, Shire of Murray, Community groups and property owners. This covered an area from North Dandalup to Wonnerup. A large

number were also donated to bush fire victims at Lake Clifton and Toodyay.

The Million Tree Programme also grew 7,500 plants and were involved in 16 plantings in the, City of Mandurah reserves, school grounds, beach sand dunes, Nell's Block wetlands project near Waroona, and at the Pinjarra Trotting Track wetland rehabilitation.

The Nell's Block Project, our fourth year of involvement there, saw well over 200 school children, teachers, and MOTT helpers, in partnership with Greening Australia staff, plant 16,000 various species, over two days. It is now a nature wonderland.

The trotting track rehabilitation project, done in partnership with the Shire of Murray, also had a substantial amount of planting with plants coming from MTP schools in the area and

from Peel Branch growers. Our new partnership with the Shire of Murray continued with us growing approx. 10,000 plants and helping them to plant at Herron.

We continued our close liaison at Wonnerup with another planting and it is wonderful to see the difference it has made to a once barren area. The strike rate is incredible. Work with Friends of Island Point and with the Murdoch University seed collecting continued again this year. Through a grant from the Lotterywest we were able to extend Rays Shed by 25 square metres giving us much needed room for our increase in activities. As you can see a busy year indeed which could not have been done without such a willing and hardworking group as yourselves.

Lyn has again worked very hard all year. However she has indicated she is standing down which is a loss and I would especially like to thank her for her loyal service and help she has given me, making my job so much easier. Judy, has had another super year with the MTP, which has brought high praise throughout MOTT. I believe we may be requested to help set up in other areas. Kaye, Brian, Alex, Ray, and Peter have excelled themselves again this year and are indeed a hardworking co-ordinating team. Bel, Fred, Natalie have all carried out their duties diligently.

To the above and to all members I can't thank you enough for making Peel Branch such a success. This is shown in the number of community awards that we have been selected as finalists this year. Keep up the good work and happy growing in 2012

Manny Milonas - Chairman



It's been an exciting transitional year for Perth City Farm (PCF) with lots of changes occurring both physically to the site and behind the scenes in administration. Long term Director and co-founder Rosanne Scott and Farm Manager Thom Scott, have moved on to live and work in New Norcia. Their contribution and dedication to the PCF community resulted in securing a 40-year lease,

upgrading infrastructure and fostering key partnerships, amongst a host of other achievements. In 2011, we also sadly say goodbye to Sandra Krempf, who leaves our management committee; she has been and continues to be a key mentor and guide for PCF.

Clayton Chipper, also a co-founder, has recently taken over as the new Director of PCF, and several other new staff have come on board including Julie Broad in marketing and communications, Jane Davis managing our markets, Michael Forte supervising our programs and Jason Homer managing our new edible nursery.

With this transition, PCF has a renewed focus on strengthening the connections between people and food. Several new programs and projects are emerging as we focus in on 'cities feeding people', providing hands-on opportunities for people to learn about growing food sustainably in the city and cooking healthy meals with this fresh seasonal produce.

Our urban farm site has undergone many changes in 2011. With our renewed focus on growing food, we have built two recirculating aquaponics systems where we grow both fish and seasonal vegetables. The community garden space has been transformed back into food production; we have completely rebuilt the irrigation system so no scheme water is used, and we have rebuilt many new gardens for growing fresh produce. Since mid-2011, we have been growing and harvesting a cornucopia of seasonal vegetables and herbs that go to our market stall, community lunches and our cafe.

One of our key goals is to divert urban waste streams to be used as organic resources for our urban farming operations. One exciting new project that achieves this goal is our GRo (Grounds Recycled Organically) project where we collect recycled coffee grounds from local cafes upon which we grow Oyster mushrooms. We have recently been successful in receiving two grants to support both our GRo project and wider sustainable agriculture education in the city. Our lock-up fodder system for poultry has also been completely rebuilt and we are currently planning a new flock of laying hens and crops to be planted in that area.

The PCF markets has a new look in 2011, with the Saturday markets gaining several new stall holders and moving outside for a renewed festive atmosphere. We have also completely

rebuilt a new nursery that sells edible plants and provides opportunities for people to learn how to propagate seeds and cuttings. Our nursery is open during the week and on market day.

In 2011, PCF continued to host both informal and accredited training and employment programs including Work for the Dole, National Green Jobs Corps, and several training courses in partnership with the Central Institute of Technology. We also still offer volunteer opportunities for community members wanting to contribute to our community based agriculture project.

Lastly, we have completely rebuilt the PCF website ([perthcityfarm.org.au](http://perthcityfarm.org.au)) and have initiated several other social media streams that now offer many ways for community members and partners to stay up to date on progress and key milestones for our project. We are very excited about the possibilities for 2012 as we gain a clearer focus on our mission and build upon the achievements from our hard work in 2011.

Clayton Chipper - Director



The 2010 – 2011 financial year was one of change and new beginnings for the Revegetation Centre. With changes and additions to staff and projects we were all certainly kept very busy.

Monica Durcan began the year as the Acting Revegetation Manager while Erin Lee was still on maternity leave. Upon Erin's return in January 2011, Monica agreed to stay on with MOTT as the Revegetation Development Manager to help in tender and funding opportunities.

With a need to lift our profile amongst the other professional planting companies we decided that a small adjustment to our branch name would be appropriate. The Reveg Team changed to the Revegetation Centre with also a slight change to the way the Management Committee (RCMC) was run. We invited Carbon Neutral to have a permanent member on our committee which is currently filled by Koo Lloyd-Kane, Planting Manager of Carbon Neutral. We would like to take this opportunity to thank outgoing Committee members Denis Mitchell, Ric Gleadell and Monica Durcan for their contribution to the running of the RCMC.

Our planting program was smaller than what has been in past years but with the introduction of two new programs and less staff than previous planting seasons we were still very busy during the winter months. Dwayne Durcan joined our small team and along with a number of casual planting staff, we were able to undertake quite a few small contract planting jobs, which we hope to expand in the 2012 planting season.

For Carbon Neutral we project managed the planting of a total of 144,496 seedlings. 94,880 seedlings were used to establish 3 new sites of mixed native and oil mallee

plantings. The remaining 49,616 seedlings were planted on previous sites that had not established to the sites full potential. The total number is expected to increase for the 2012 planting season.

2011 saw the launch of MOTT's new rural flagship program 'Putting it Back, Together'. Expressions of Interest were received from the Wallatin Wildlife and Landcare Group, around Kellerberrin and the Morbinning Catchment Group, east of Beverley. A total of 117,392 seedlings were donated to the two groups to plant on 15 separate properties. The 12 farmers in the Kellerberrin area were able to plant the seedlings themselves due to a lack of volunteers being able to be found for the designated weekend. We were able to get enough corporate and Activate volunteers to finish one of the properties in the Morbinning Catchment area with a contractor finishing the remaining 2 properties. Although not enough donations were able to be sourced to cover the costs of the program it was still deemed to be successful and a worthwhile cause. It will continue in 2012 at a reduced capacity.

The Revegetation Centre has always carried out a small number of contract plantings each planting season, but this has now been formalized and expanded into 'Farmscape Services'. The current and new casual Field staff are contracted to undertake property planning advice as well as carry out the planting works. In 2011, 15,356 seedlings were planted on 5 separate planting contracts. Further strategies to expand this part of the business are under way for the 2012 season. A big thank you to the Revegetation Centre staff and volunteers in making the year a successful one and we look forward to watching our newly planted seedlings growing into the forests we know they will become.

Erin Lee -Manager





Rockingham's 20th Anniversary of the inaugural meeting was celebrated by a BBQ on Friday 29th October 2010.

18 students from Rockingham TAFE were shown the finer points of seed collecting, around Lake Cooloongup, by Cedric in November, to help with their Horticultural Studies. It was much appreciated by the students and Tutor alike. Seed collecting, from Lake Cooloongup, Mount Brown/Beeliar Park and Baldivis Children's Forest went very well again this year. Cedric, Jim and others have collected a wide variety of species for our own use, as well as for storage and use of one of our customers. This helps with both costs & provenance

Our sub lease of the Nursery land, from Rockingham Golf Club and City of Rockingham is being extended to 2031

International Power Mitsui donated \$1600 for us to purchase a Rainwater Tank. It has filled up several times, with the water being used predominantly for watering the newly planted seedlings near the Nursery. It has resulted in a great survival rate, with only 3 dying, out of 200, to date. WACOSS, donated funds to us after an "Energy Audit" was completed. We bought Shadecloth and two new computers (with energy-saving screens) with the money.

The official launch of our new Lunchroom/Meeting room - the money for which came from a Lotterywest Grant - took place Saturday 16th July, with a Sausage Sizzle and a great Morning Tea. We had about 50 people attend, with representatives from Hazelmere, Peel, and the Executive Board. A lot of effort and time was put in by our team of 'Engineers', who insulated and clad the walls, put together flat packs of kitchen units and painted etc. It has been well used and much appreciated by all.

Over 220, 500 plants left the Nursery this year, including over 9,000 being donated to various groups, organisations and causes.

The seedlings got planted in many locations besides our normal areas around Rockingham, Baldivis, Cockburn, Kwinana and Mandurah. Some were sent to Penguin Island, Rottnest Island, Murdoch University, and as far South as Bunbury and even Hopetoun (nr Esperance).

Welcome to all the new people that joined us in 2011.

Grateful thanks to all the ones that left - due to illness, retirement or other commitments.

Sincere thanks go to all our hard working volunteers and Committee members once again for making it yet another enjoyable and successful year.

Brenda Kent - Branch Manager



The 2010/11 season at St Barbe Grove Nursery has been a good one on many levels.

Production wise, the nursery grew 215,000 seedlings of which 65,000 were from provenance seed. 13,000 were for plants free to residents run through the Kalamunda Shire, Town of Bassendean and City of Swan. 12,000 seedlings were supplied to the Shire of

Mundaring who run their own plant giveaway. Other large seedling orders were supplied to Armadale Gosnells Landcare group, Whiteman Park and Tranen, the latter planting at the Perth Airport. Some smaller orders went as far afield as Eighty mile beach, while another went to the Perth Zoo fodder farm in Byford.

As always, we like to support schools and other not for profit community groups to which several donations of seedlings were made. These included schools from Middle Swan Primary to Wickepin Primary as well as Kaarakin Black Cockatoo Rehabilitation Centre.

By the end of the season there were absolutely no plants left in the Nursery. (See photo insert of empty benches.) This is certainly a first, and such a great indication of the value and demand for our local West Australian plants.



Staff attended a workshop run by the Nursery Industry which has introduced Ecohort, an Environmental Accreditation System. Ecohort provides a format to ensure that we can demonstrate to industry, government and the community that we have sound environmental and natural resource stewardship. Our nursery's proximity to the Helena River means we are operating in a sensitive natural area. We need to measure and manage its impact while complying with environmental legislation. Many of the required benchmarks have been reached and we are hoping to gain Ecohort accreditation duly.

St Barbe Nursery hosts and provides work experience training to students with learning difficulties and autism. We foster inclusivity, but this year one young lad named Connor went a long way to engage us, and continued to astound us by his knowledge of local retailers. Whatever area our Vollies came from, he could name shops, movies and MacDonald's where they might shop. Enriching moments all round!

Sadly we farewelled Kerryjoy, our wonderful Nursery Assistant. Kerryjoy retired in September after 12 years of Volunteer and paid service. We miss her meticulous work ethic and her fun loving and caring personality. We welcomed Fern Pendragon to fill the role, who has caught on quickly and taken it all in her stride. It does help when you have worked as a volunteer first, as Fern has.

We also farewelled Ray Hill, the Nursery Committee chair. Ray has returned to England. He joined us in 2003, and was a very well regarded member of our society. His time and energy will be missed.



It's been another interesting year, the benches have hardly grown cold from the despatching of seedlings before new pots and racks have taken their place and the Nursery is once more a haze of green. None of this could happen without the consistent efforts of our volunteers who work tirelessly through the cycles of pot washing, seeding, growth, packing and dispatching orders.

Many thanks to you all.

Ross Burnett - Nursery Manager St Barbe Grove Nursery

**Farm Tree Help Scheme**

The FTHS continues to operate in a reduced capacity. 8,500 seedlings were grown by Home growers this season. Of these 5,000 were for farmer orders and 3,500 went to reserve and as supplement for SBG Nursery stocks. Twenty growers remain in the Scheme.

J Young, FTHS

In our tenth year since establishment, 2011 has been a positive year for addressing climate change and ecological benefits of reforestation.

The 2011 planting season has been excellent with good rains at planting right through to early December. A summary of key activities in 2010-11 is listed below.

**Plantings:** Carbon Neutral planted 480 hectares on eight sites in Western Australia and South Australia.

**Subscribers:** As well as thousands of personal supporters, over 560 organisations are supporting Carbon Neutral's work. Some of the more prominent organisations that we provided consulting and offsetting services to include Water Corporation, ABN Group, Acer Computers, City of Stirling, City of Joondalup, City of Rockingham and Fugro TS Marine.

**Education Presentations:** Carbon Neutral has presented at a number of seminars for businesses to better understand carbon, green marketing and energy efficiency in the workplace. We have also presented a range of talks with information on reducing, measuring and offsetting carbon emissions to various groups including the WA Chamber of Commerce, United Community, Water Corporation, Perth Rotary, WA Energy Summit, and the Business Growth Centre.

**Education:** We have included a 'Sustainability' section in the Home feature in our monthly e-newsletter. Carbon Neutral's web presence is significant and growing, being linked on around 200 websites and receiving over 6000 'hits' per month with each visitor spending an average of 3.5 minutes on the site. Our web site offers a range of educational material linked to climate

change issues and our carbon offsetting services. We regularly post educational and promotional videos on YouTube and we disseminate information through social networks Facebook and Twitter.

**Legislation:** The passing of the Carbon Farming Initiative (CFI) legislation in 2011 will provide a framework for farmers, landholders and carbon sink companies like Carbon Neutral to plant trees and generate 'carbon credits'. CFI credits will be designed and conducted in accordance with the methodologies and rules set out in the legislation and can be sold into domestic and international carbon markets.

The Carbon Price legislation was passed in November 2011 and will create a market for CFI generated carbon credits from 1 July 2012. Companies which are liable to pay the 'carbon tax' can elect to allocate up to 5% of their permits to CFI generated credits in the fixed price period (2012-2015) and then up to 100% from 1 July 2015.

**Establishing a value on Biodiversity:** While some emitters will seek cheaper CFI credits from Oil Mallee or monoculture plantations, we are confident that our biodiverse plantings will be as attractive in the compliance market as they have been in the voluntary offset market. Many companies' management and staff place a value on the environmental co-benefits from biodiverse block plantings.

**Sourcing Land for Planting:** One of our educational challenges is to raise community awareness on the economic, environmental and social benefits of biodiverse tree planting in the rural landscape. Finding suitable non-productive farmland for planting where landowners are prepared to accept a 100 year legal covenant has been challenging. Carbon Neutral is aiming to plant on some larger sites in 2012 to achieve economies of scale. We also aim to continue to develop restoration projects that form part of a corridor, such as the Gondwana Link.

I wish to acknowledge Koo Lloyd-Kane and Mariana Brekalo for the professional and harmonious relationship they have developed with the MOTT Revegetation team. We look forward to continuing to work with MOTT to educate the community on revegetation and reinforce the 'conservation value' of carbon sinks to our supporters.

Ray Wilson - Chief Executive Officer

### Men of the Trees/Shirley Fyfe Honours Scholarship In Environmental Science



The scholarship is annually awarded to a Murdoch University graduate in Environmental Science whose forthcoming Honours Theses is centred on a topic oriented to the preservation of trees and plants in Western Australia and the land in general. It perpetuates the memory of

Shirley Fyfe, a very early Men of the Trees member, whose dedication and unremitting toil in so many facets of our organisation contributed much to its continuing success. This year's scholarship was awarded to an outstanding candidate, Barton Huntley. His research topic was:

The application of remote sensing techniques to accurately map the range of the WA Peppermint Tree, *Agonis flexuosa*. The Peppermint contributes to the survival of the vulnerable Western Ringtail Possum. This mapping technique could be used to detect changes in vegetation over time and to establish strategies to improve possum habitat.

### Men of the Trees Public Environmental Gift Fund

All MOTT branches are invited to submit requests for funding from the MOTT PEGF by the closing dates which are: 15 February, 15 May, 15 August and 15 November each year. No applications were received in August 2011 or November 2011

15 February		
Establishing PIBT program	R/Centre	\$25,000
Trees for shows and talks	Barrie Oldfield	\$1,150
15 May		
Environmental display and support materials		
	Administration	\$10,000

## Guiding Statements and Goals

The Men of the Trees' Strategic Plan 2010 – 2015 ( [www.menofthetrees.com.au](http://www.menofthetrees.com.au)) provides guiding statements on its mission, vision, principles and goals.

To progressively achieve the goals, strategies have been developed and implemented throughout the 2011 period in the following section.

### Mission

To bring people together to grow and plant trees and to achieve healthy, productive, sustainable landscapes.

### \*Principles

- Care for and respect the Land
- Care for and respect People
- Share the Surplus.

\* The above Principles are based on Permaculture Ethics developed by Holmgren and Mollison. MOTT has adopted these as MOTT has not been able to better these principles as guiding principles for the whole organisation.

### Goals

Our key goals are:

**Goal One:** To acquire and revegetate 2,000 ha of wheatbelt land to a hydrological and ecological steady state, and to champion biodiversity plantings across WA to improve the health, productivity and sustainability of degraded land

**Goal Two:** To become a leader in environmental education specialising in revegetation, food and community engagement.

**Goal Three:** To achieve 200 new active champions to help MOTT achieve its vision.

**Goal Four:** To ensure continuous improvement to achieve excellence in financial and organisational management and governance whilst maintaining a strong community spirit

*"I believe that this generation may either be the last to exist in any semblance of a civilised world, or it will be the first to have the vision, the daring and the greatness to say, 'I will have nothing to do with this destruction of life; I will play no part in this devastation of the land, I am destined to live and work for peaceful construction for I am morally responsible for the world of today and the generations of tomorrow'".*

Richard St Barbe Baker, OBE  
Founder of Men of the Trees in 1922



## Goal One

*To champion biodiversity plantings across WA to improve the health, productivity and sustainability of degraded land*

### 2011 Plantings

*All plantings are mixed native species unless otherwise stated*

Date	Location	Details	Seedlings	Contact
June	Mirrabooka	Planting at bushland in Mirrabooka	1398	R/Centre
June	Red Hill	Planting at Amphitheatre plus the erection of tree guards	3000	R/Centre
July	Claremont	Planting near Lake Claremont for the Town of Claremont	6000	R/Centre
July	Boyup Brook	Planting on private property bordering a gully	1080	R/Centre
August	Cardup	Contract planting in drainage lines	1400	R/Centre
July	York	Planting on private property	3776	R/Centre
July	Kellerberrin	Putting it Back Together' funded seedlings. Landowners planted the seedlings themselves	64840	R/Centre
August	Beverley	Putting it Back Together' funded seedlings. Seedlings planted by corporate, MOTT and Activate groups. Remaining seedlings were planted by a contractor	52552	R/Centre
June	Watheroo	Carbon Neutral Infill and Replant of oil mallees	31700	R/Centre
July	Popanyinning	Carbon Neutral Oil Mallee and mixed native planting	30599	R/Centre
July	Coomberdale	Carbon Neutral Infill of 2008 and 2009 plantings	8128	R/Centre
July	Brookton	Carbon Neutral planting	30672	R/Centre
July	Kellerberrin	Carbon Neutral planting	33609	R/Centre
July	Koorda	Carbon Neutral Infill planting of oil mallees	3000	R/Centre
July	York	Carbon Neutral Infill planting	4740	R/Centre
July	Brookton	Carbon Neutral Infill planting	2048	R/Centre
8th June	Halls Head	Halls Head Primary School planting - Alder Court	168	Peel
16th June	Falcon	Sand dunes Avalon Beach	368	Peel
17th June	Dawesville	School grounds Catholic Primary School	428	Peel
20th June	Falcon	School grounds Catholic Primary School	270	Peel
22nd June	Waroona/Harvey	Foundation Christian College - Nells Block	470	Peel
22nd June	Waroona/Harvey	Mandurah Catholica College - Nells Block	587	Peel
23rd June	Waroona/Harvey	Mandurah Senior College - Nells Block	880	Peel
23rd June	Waroona/Harvey	Riverside Primary School - Nells Block	571	Peel
24th June	Daydream Plaza	Halls Head P.S. - Sand dunes	315	Peel
6th July	Comet Bay	Comet Bay College - School grounds	300	Peel
8th July	Pinjarra	Carcoola Primary School - school grounds	352	Peel
16th July	Marlee Reserve	Assumption Catholic College	360	Peel
29th July	Pinjarra	Carcoola Primary School - trotting track	554	Peel
29th July	Pinjarra	Pinjarra Primary School - trotting track	666	Peel
22nd Aug	North Dandalup	North Dandalup P.S. - Beau Sovereign Drive	483	Peel
8th Sept	Pinjarra	Primary School Grounds	232	Peel
Various	Herron Point	Revegetation with Shire of Murray	9870	Peel
Various	Culleenup Island	Revegetation with Shire of Murray	3696	Peel
Various	Harvey	Revegetation with Harvey River Restoration Team	3456	Peel
Various	Waroona/Harvey	Nells Block with Greening Australia	5040	Peel
Various	Wonnerup	Revegetation of damaged beach front	1000	Peel
Various	Mandurah	With City of Mandurah	3034	Peel
Various	Miscellaneous	Small plantings at various locations	500	Peel
12th June	Whiteman Park	Childrens Forest Planting	2000	Admin
July	Beckenham	Memorial Grove Planting	4000	Admin
28th June	Hazelmere	Brickmakers Kalamunda Road.	1800	St Barbe Grove
August	R'ham Lakes Reg Pk	Lake Coo loongup	600	Rockingham
August	Serpentine	Serpentine Jarrahdale Grammar School	600	Rockingham

## Goal One

## 2011 Plantings

### Summary of Plantings

Branch	Total
Admin Centre	6,000
Dowerin and Regions	350
Peel	33,654
R/Centre - trees planted for Carbon Neutral	94,880
R/Centre - infill for Carbon Neutral Plantings	49,616
R/Centre - other contract seedlings planted	134,046
Rockingham / Kwinana Nursery	1,200
St Barbe Grove Nursery	1,800
	<b>321,546</b>



### 2011 Seedlings Grown

*MOTT growers have supplied seedlings to clients / projects in the following region*

Branch	Swan Coastal Plain	Wheatbelt	Other	No. of Seedlings
Peel Branch	37,500			37,500
Rockingham Kwinana Nursery	220,500			220,500
St Barbe Grove Nursery	200,000	10,000	5,000	215,000
Farm Tree Help Scheme	0	5,000	3,500 (SBGN reserve)	8,500
<b>Total Seedlings Grown</b>	<b>458,000</b>	<b>15,000</b>	<b>8,500</b>	<b>481,500</b>

*Seedlings grown by nurseries and donated to other community causes*

Donated to	Number	Branch
Total number of trees donated to various organisations	9,000	Rockingham
Donated to water wise accredited schools	7,000	St Barbe Grove
Donated to Toodyay/Lake Clifton Fire victims/Dowerin salt areas	3,900	Peel

## Goal Two

*To become a leader in environmental education specialising in revegetation, food and community engagement.*

### A) Research

Research project	Branch
Study results of plantings at Ludlow – contribution to Murdoch University Tuart Research	Peel
Seed Collecting and study results of planting at Lake Clifton – contribution to Murdoch University Tuart Research	Peel
Nambling: Planting of 350 salt tolerant species and spreading of mulch on saline flats. These trials are in their 12th year.	Dowerin and Regions

## B) Publications and other Resources

Goal Two

Branch	Publications	Distribution
Admin	2010 Annual Report:	350
Admin	MOTTO: Summer, Autumn, Winter, Spring 2011 editions, ISSN 1835 6699, Issue 122 to 125	2,300 copies 900 emailed
Admin	Farmscape Services Brochure	500
Admin	Pull – up Banners promoting Men of the Trees at events	6
Admin	The West Australian special lift out for World Environment day – article on MOTT	Large circulation
Admin	Men of the Trees Brochure	1,000
Admin	Book - Tall Timber by Richard St Barbe Baker, Published by Men of the Trees in WA	On request
Admin	CANOPY Issue 1 to issue 38	by email
Admin	Strategic Plan 2010 – 2015, endorsed by the Board on 21 October 2009	Available on request
Admin	Diversity Across the Wheatbelt: Putting it back, together brochure	5,000
PCF	E-news letter issue 1 May 2010	emailed
SBGN	2011 plant order catalogue	600

## Presentations / Workshops / Shows

Date	Event / Theme	Branch
October 4, 2010	Mental Health Week – presence at Fair	Rockingham
October 24	Secret Harbour Spring Fair	Rockingham
Nov 6	Baldivis Country Fair	Rockingham
April 20	Royal Naval Association presentation to members	Admin
April 27	Shawford Lodge Retirement Home presentation to residents	Admin
May 1	Whiteman Park/Men of the Trees EnviroFest	MOTT all
June 21	Tree planting ceremony for visitor Anne-Marie Barnes, granddaughter of Richard St Barbe Baker, founder of Men of the Trees	SBGN
August 6	Presentation to United Nations Australia Association Conference	Admin
August 26	Presentation to Fortescue Metals Group Ltd	Admin
Sept 9	Presentation to Rotary Club of Swan Districts	Admin
Sept 16	Combined CWA Crafters and Home, Farm and Gardeners of CWA Exhibition	Admin
Sept 28	Presentation to Uniting Church, West Perth	Admin
Sept 28	Quiz on Legs at Kings Park	Admin
October 2	Walk the Zig Zag, Kalamunda	TFP/Admin
October 8	Presentation at Northbridge Piazza Spaceship Earth Film Season	Admin
October 15	Karragullen Field day	TFP
October 15	Home Expo and Sustainable Living Expo	Admin
October 16	Whiteman Park 25th Anniversary Celebration Fete	Admin
October 18	Presentation of Green Map by MLA for Hasluck, Mr Ben Wyatt	SBGN
October 29	Gidgeganup Show	Admin
November 9	Have a Go Day	Admin
November 11	Strictly Hypothetical at Perth City Farm	Friends PCF
Nov 25	Ellenbrooke Garden Club presentation to members	Admin
Nov 25	Strictly Hypothetical at Perth City Farm	Friends PCF
December 9	Strictly Hypothetical at Perth City Farm	Friends PCF

## Goal Three

*To achieve 200 new active champions to help MOTT achieve its vision*

Membership	
<b>MOTT Members</b>	
New members 2010/11:	35
Total members 2011:	555
<b>Subscriptions to Whiteman Park Children's Forest Program</b>	
New Subscriptions 2010/11	40
<b>Subscriptions to the Friends of City Farm Program</b>	
New Subscriptions 2010/11	41 (inc families)
<b>Volunteers</b>	
Volunteers 2010/11	2,276

Volunteer Hours	
Board	40
Administration Centre	801
Children's Forest	320
Dowerin & Regions	431
Farm Tree Help Scheme	76
Memorial Groves	46
Peel	17,000
Perth City Farm	9,500
Reveg Team	1,200
Rockingham Kwinana Nursery	6,960
St Barbe Grove Nursery & grounds	10,943
Events	376
<b>TOTALS</b>	<b>47,693</b>

## Goal Four

*To ensure continuous improvement to achieve excellence in financial and organisational management and governance whilst maintaining a strong community spirit.*

The MOTT Board continues to work to develop a professionally managed organisation in accordance with the Constitution and the Strategic Plan. The Board met six times through the year. The Board is advised by the Finance, Marketing and Revegetation Committees along with Branch Management Committees.

### Management and Planning



The following has been achieved during the 2010/11 financial year.

- Planning days, workshops and training focused on growing the vision
- Review options to progress MOTT's financial system
- Revegetating the Wheatbelt
- Branches to have first aid trained personal at all MOTT events.
- Induction procedure for all new volunteers developed and implemented

– The Revegetation Centre Management Committee met seven times in relation to CN / MOTT relationships, CN/MOTT Planting Contract and the Putting it back, together initiative.

– Two major grant applications were made for the 2011/12 period: one to support administrative processes/governance requirements/resources for all branches and the other for an externally hosted, terminal server based IT system, on-site network infrastructure, associated software, user hardware (PCs and laptops) at all MOTT sites, including field officers in the Wheatbelt area.

– The Finance Committee met once: to review financial reporting procedures and budget processes.

– Marketing Plan was implemented

## Acknowledgements

MOTT is governed by a voluntary Executive Board, specialist sub committees of the Board and Branch Management Committees.

### Executive Board

Christian Marriott	President	2010
	Vice President	2010
	Board member	2009
		2007
Richard Beresford	Vice President	Jan 2011
	Board member	2011
Bill Chambers	Hon. Treasurer	2010
	Board Member	2007
Brian Wickins	Hon. Secretary	Jan 2011
	Board member	2007
John Morrell	Board Member	2011
Derek Gill	Board Member	2011
Terry Gadenne	Board Member	2011
Tracey Salmon	Board Member	2011
Palenque Blair	Board Member	(Maternity) 2010

### Finance Committee

Bill Chambers	Treasurer /Board	2010
Cliff Morris	CEO	2011
Erin Lee	RVC Manager	2008
Ross Burnett	SBGN Manager	2010
Brenda Kent	RKN Manager	2008
Manny Milonas	Peel Chairman	2008

### Marketing Committee

Brian Wickins	Board	2009
Cliff Morris	CEO	2011
Erin Lee	RVC Manager	2008
Ross Burnett	SBGN Manager	2009
Brenda Kent	RKN Manager	2008
Manny Milonas	Peel Chairman	2008

### Revegetation Centre Committee

John Morrell	Board	2011
Tammy Hanson	RVC Branch	2011
Cliff Morris	CEO	2010
Erin Lee	RVC Manager	2010
Koo Lloyd-Kane	Carbon Neutral	2011

### Public Environmental Gift Fund

#### Management Committee (Trustees)

Bill Chambers	Treasurer	2007
Christian Marriott		2007
Coral Buscombe		2007
Palenque Blair		(Maternity) 2010

### Branch Management Committees

#### Administration Centre

Christian Marriott	Board	2010
Cliff Morris	CEO	2011

#### Bowra & O'Dea Memorial Groves

Cliff Morris	CEO	2011
Bernadine Brierty	Bowra & O'Dea	1995
Julie Roberts	SERCUL	2008

#### Whiteman Park Children's Forest

Carol Lewis	Project Manager /MOTT	2000
Cliff Morris	CEO	2011
Dr Chris Rafferty	Whiteman Park	2007
Sarah Stevenson	Whiteman Park	2008

#### Dowerin and Regions

Adrian Price	Chair/Secretary	2007
Rex Adams	Treasurer	2007
Barrie Oldfield	Member	2007

#### Peel Branch

Manny Milonas	Chairperson
Pip Newman	Vice Chairperson
Jackie Schoen	Secretary
Barry King	Treasurer
Kaye & Brian Toussaint	Planting Coordinators
Fred Lyons	Safety Officer
Judy Olsen	Schools Coordinator (MTP)
Ray Quaife	Historian
Natalie Butler	Property Officer
Bel Matthews	Publicity officer
Geoff Carruthers	First Aider

#### Perth City Farm

Ian Rawlings	Chairperson	2007
Clayton Chipper	PCF Director	2011
Tracey Pearce		2009
Neal Bodel		2011
Cliff Morris	CEO	2011

#### Rockingham

Brian Ellam	Chairperson	1993
Brenda Kent	Branch Manager	2001
Cedric Bakewell	Secretary	2009
James Hunter	Nursery Manager	2005
Noel Heath	Wandi Memorial Grove	2007

#### Revegetation Centre

Cliff Morris	CEO	2010
Erin Lee	Branch Manager	2006
John Morrell	Board	2011
Tammy Hanson	Reveg Centre	2011

#### St Barbe Grove Nursery & Grounds

Jenny Lees		2004
Jenny Young	Plant Species/FTHS	1992
Neil McMurtrie		2005
Chris Durant	Accounts/Acting Chair	2008
Ray Hill	Outgoing Chair	2008
Bruce Elliott		2010
Ross Burnett	Nursery Manager	2009



## INDEPENDENT AUDITOR'S REPORT

### THE MEN OF THE TREES INCORPORATED Annual Report to the Members of The Men Of The Trees Incorporated

#### FINANCIAL STATEMENT

#### Scope

I have audited the attached special purpose financial statements comprising statements of the financial performance and position (marked with the Letter "A") for the period ended 30th September 2011.

My audit has been conducted in accordance with Australian auditing Standards applicable to the audit of special purpose financial reports. My procedures included examination, on a test basis, of evidence supporting the amounts and other disclosures in the financial statements and the evaluation of significant accounting estimates. These procedures have been undertaken to form an opinion as to whether, in all material respects, the financial statements are presented fairly in accordance with accounting policies.

The financial statement audit opinion expressed in this report has been formed on the above basis.

#### Audit Opinion

In my opinion, the financial reports represented fairly the result of operations of The Men Of The Trees Incorporated for the period ended 30th September 2011.

**M J Kirby**  
**Registered Company Auditor**  
**Australian Securities and Investments Commission**



**MEN OF THE TREES (INC.)**  
**FINANCIAL REPORT FOR THE PERIOD ENDED**  
**30TH SEPTEMBER 2011**

Bill Chambers  
Chartered Accountant  
Suite 2, 61 Hampden Road Nedlands WA 6009  
9386 2711

“A”

**MEN OF THE TREES (INC.)**  
**STATEMENT OF INCOME & EXPENDITURE**  
**FOR THE PERIOD ENDED 30<sup>TH</sup> SEPTEMBER 2011**

	Note	Men of the Trees Inc 2011 \$	2010 \$	Consolidated 2011 \$	2010 \$
<b>INCOME</b>					
Sales		1,187,386	738,294	697,184	772,566
Less Cost of Sales		298,225	171,043	298,225	171,043
		889,161	567,251	398,959	601,523
Sale of Trees		285,560	879,685	285,560	216,177
Carbon Reduction Program		-	-	709,607	104,249
Catering		23,194	4,979	23,194	4,979
Donations		62,481	51,080	900,981	1,167,070
Consulting		36,962	-	180,509	-
Education & Workshops		4,978	3,400	7,998	3,400
Fundraising		14,812	1,775	14,812	1,775
Grants		76,959	756,084	76,959	756,084
Hire of Plant & Equipment		59,017	48,034	59,017	48,034
Interest		25,712	24,871	43,716	77,202
Participation Fee		2,839	1,732	2,839	1,732
Services & Contracts		3,645	519	3,645	519
Sponsorships		45,219	40,618	45,219	40,618
Subscriptions		15,109	13,348	15,109	861,777
Sundry Receipts		252	10,272	1,738	16,498
		1,545,900	2,403,648	2,769,861	3,901,637
<b>EXPENDITURE</b>					
		1,881,625	1,735,649	3,109,026	3,642,797
<b>NET SURPLUS/(DEFICIT)</b>					
		(335,725)	667,999	(339,164)	258,840

The accompanying notes form part of these financial statements.

“A”

**MEN OF THE TREES (INC.)**

**STATEMENT OF INCOME & EXPENDITURE  
FOR THE PERIOD ENDED 30<sup>TH</sup> SEPTEMBER 2011**

	Note	Men of the Trees Inc		Consolidated	
		2011 \$	2010 \$	2011 \$	2010 \$
<b>EXPENDITURE</b>					
Accreditation		2,766	3,971	2,766	3,971
Accountancy & Audit		6,355	6,355	6,355	6,355
Administration Costs		-	101	-	101
Advertising & Promotion		52,963	19,897	52,963	19,897
Bank Charges		6,164	2,647	6,164	2,647
Books		1,379	364	1,379	364
Catering		15,146	9,843	15,146	9,843
Cleaning		3,658	445	3,658	-
Computer Expenses		23,748	8,837	23,748	8,837
Depreciation		82,809	57,587	101,049	77,369
Donations		1,573	455	1,573	455
Electricity		15,779	12,634	15,779	12,634
Employee Amenities		7,190	5,656	7,190	5,656
Freight & Cartage		18,279	8,216	18,279	8,216
Gas		5,794	1,920	5,794	1,920
GST Adjustment		-	12,249	-	12,249
Hire of Plant & Equipment		23,516	16,958	23,516	16,958
Holiday pay		(12,298)	8,999	(12,298)	8,999
Honoraria		-	15,000	-	15,000
Insurance		44,541	41,923	44,541	41,923
Internet		4,863	3,404	4,863	3,404
Labels		1,760	726	1,760	726
Legal Costs		7,395	45	7,395	45
Long Service Leave		(7,402)	16,963	(7,402)	16,963
Materials		51,697	25,363	51,697	25,363
Minor Plant & Equipment		2,857	2,018	2,857	2,018
Non Tree Offsets		-	-	61,178	121,723
Nursery Expenses		6,155	7,694	6,155	7,694
Occupational Health & Safety		2,462	2,665	2,462	2,665
Office Expenses		7,412	8,060	7,412	45,764
Operating Expenses		-	-	312,438	61,918
Pest Control		26,323	30,260	26,323	30,260
Plantings		94,800	285,428	324,308	1,154,681
Postage		6,195	3,064	6,195	3,064
Pots & Trays		14,376	372	14,376	372
Potting Mix & Soil		24,529	16,154	24,529	16,154
Printing		11,573	19,067	11,573	19,067
Professional Fees		86,455	79,615	86,455	127,462
Racks		5,500	2,491	5,500	2,491
Rent, Rates & Taxes		5,006	12,638	5,006	62,249
Repairs & Maintenance		37,200	8,621	37,200	8,621
Reticulation		5,582	7,957	5,582	7,957
Security Costs		4,480	3,528	4,480	3,528
Seeds		15,734	7,375	15,734	7,375

The accompanying notes form part of these financial statements.

“A”

**MEN OF THE TREES (INC.)**

**STATEMENT OF INCOME & EXPENDITURE  
FOR THE PERIOD ENDED 30<sup>TH</sup> SEPTEMBER 2011**

	Note	Men of the Trees Inc		Consolidated	
		2011	2010	2011	2010
		\$	\$	\$	\$
<b>EXPENDITURE (Continued)</b>					
Staff Training		4,536	4,241	4,536	4,241
Subscriptions		2,370	654	2,370	654
Sundry Expenses		5,296	2,855	5,296	3,300
Superannuation Contributions		72,616	51,458	72,616	51,458
Telephone		13,234	13,932	13,234	13,932
Travelling Expenses		24,222	32,772	24,222	32,772
Trees		145,636	247,876	145,636	247,876
Vehicle Expenses		7,805	9,072	7,805	9,072
Wages		882,765	585,133	1,488,802	1,284,443
Water		8,831	10,091	8,831	10,091
		<u>1,881,625</u>	<u>1,735,649</u>	<u>3,109,026</u>	<u>3,642,797</u>

The accompanying notes form part of these financial statements.

“A”

**MEN OF THE TREES (INC.)**

**STATEMENT OF FINANCIAL POSITION  
AS AT 30<sup>TH</sup> SEPTEMBER 2011**

	Note	Men of the Trees Inc		Consolidated	
		2011	2010	2011	2010
		\$	\$	\$	\$
<b>CURRENT ASSETS</b>					
Cash	3	501,788	804,573	691,826	1,394,745
Receivables	4	396,876	259,795	488,032	396,971
Inventories	5	9,958	36,473	24,827	40,530
<b>TOTAL CURRENT ASSETS</b>		<u>908,622</u>	<u>1,100,841</u>	<u>1,204,685</u>	<u>1,832,246</u>
<b>NON-CURRENT ASSETS</b>					
Land held for sale		-	-	977,841	977,841
Property, plant and equipment	6	808,514	868,573	815,434	893,729
<b>TOTAL NON-CURRENT ASSETS</b>		<u>808,514</u>	<u>868,573</u>	<u>1,793,275</u>	<u>1,871,570</u>
<b>TOTAL ASSETS</b>		<u>1,717,136</u>	<u>1,969,414</u>	<u>2,997,960</u>	<u>3,703,816</u>
<b>CURRENT LIABILITIES</b>					
Creditors and borrowings	7	152,628	47,433	261,917	459,825
Provisions	8	27,023	39,320	58,490	80,905
<b>TOTAL CURRENT LIABILITIES</b>		<u>179,651</u>	<u>86,753</u>	<u>320,407</u>	<u>540,730</u>
<b>NON-CURRENT LIABILITIES</b>					
Creditors and borrowings	7	12,793	14,842	92,463	231,430
Provisions	8	27,367	34,769	27,367	34,769
<b>TOTAL NON-CURRENT LIABILITIES</b>		<u>40,160</u>	<u>49,611</u>	<u>119,830</u>	<u>266,199</u>
<b>TOTAL LIABILITIES</b>		<u>219,811</u>	<u>136,364</u>	<u>440,237</u>	<u>806,929</u>
<b>NET ASSETS (LIABILITIES)</b>		<u>1,497,325</u>	<u>1,833,050</u>	<u>2,557,723</u>	<u>2,896,887</u>
<b>MEMBERS' FUNDS</b>					
Balance Brought Forward		1,833,050	1,165,051	2,896,887	1,819,586
Surplus/(Deficit) for the Period		(335,725)	667,99	9,164)	258,840
Reclassification Adjustment	9	-	-	-	818,461
<b>TOTAL MEMBERS' FUNDS</b>		<u>1,497,325</u>	<u>1,833,050</u>	<u>2,557,723</u>	<u>2,896,887</u>

The accompanying notes form part of these financial statements.

**MEN OF THE TREES (INC.)**  
**STATEMENT OF CASH FLOWS**  
**FOR THE PERIOD ENDED 30<sup>TH</sup> SEPTEMBER 2011**

Note	Men of the Trees Inc		Consolidated	
	2011	2010	2011	2010
	\$	\$	\$	\$
<b>CASH FLOWS FROM OPERATING ACTIVITIES</b>				
Receipts from customers	1,681,332	2,413,809	2,864,370	4,089,452
Interest Received	25,712	24,871	43,716	73,255
Payments to suppliers & employees	1,987,079	1,816,015	3,588,251	3,703,238
<b>Net cash provided by (used in) operating activities</b>	<b>(280,035)</b>	<b>622,665</b>	<b>(680,165)</b>	<b>459,469</b>
<b>CASH FLOWS FROM INVESTING ACTIVITIES</b>				
Payment for property, plant & equipment	(22,750)	(631,456)	(22,754)	(1,269,029)
<b>Net cash provided by (used in) investing activities</b>	<b>(22,750)</b>	<b>(631,456)</b>	<b>(22,754)</b>	<b>(1,269,029)</b>
<b>Net increase (decrease) in cash held</b>	<b>(302,785)</b>	<b>(8,791)</b>	<b>(709,919)</b>	<b>(809,560)</b>
Cash at beginning of period	804,573	813,364	1,394,745	2,204,305
<b>Cash at end of period</b>	<b>501,788</b>	<b>804,573</b>	<b>691,826</b>	<b>1,394,745</b>

The accompanying notes form part of these financial statements.

**MEN OF THE TREES (INC.)**

**STATEMENT OF CASH FLOWS  
FOR THE PERIOD ENDED 30<sup>TH</sup> SEPTEMBER 2011**

Note	Men of the Trees Inc 2011 \$	2010 \$	Consolidated 2011 \$	2010 \$
<b>NOTES TO THE STATEMENT OF CASH FLOWS</b>				
<b>Reconciliation of Cash</b>				
Cash at the end of financial period as shown in the statement of cash flows is reconciled to the related items in the balance sheet as follows:				
Cash on Hand	2,924	3,615	2,924	3,815
Cash on Deposit	260,341	299,218	260,341	599,218
Cash at Bank	238,523	501,740	428,561	791,712
	501,788	804,573	691,826	1,394,745
<b>Reconciliation of Net Cash provided by Operating Activities to Benefits Accrued as a Result of Operations</b>				
Operating surplus	(335,725)	667,999	(339,164)	258,840
Non-cash flows in operating surplus				
Depreciation	82,809	57,587	101,049	77,369
Changes in assets and liabilities, net of the effects of purchase and disposals				
Decrease (Increase) in sundry debtors	(137,081)	(1,416)	(91,061)	94,876
Decrease (Increase) in current inventories	26,515	(9,580)	15,703	(13,637)
Decrease (Increase) in financial assets	-	-	-	-
Increase (Decrease) in sundry creditors	105,195	(117,339)	(334,826)	16,607
Increase (Decrease) in provisions	(19,699)	25,963	(29,817)	25,963
Increase/(Decrease) in life membership	(2,049)	(549)	(2,049)	(549)
Cash flows from operations	(280,035)	622,665	(680,165)	459,469

The accompanying notes form part of these financial statements.

## MEN OF THE TREES (INC.)

### NOTES TO AND FORMING PART OF THE FINANCIAL STATEMENTS FOR THE PERIOD ENDED 30<sup>TH</sup> SEPTEMBER 2011

---

#### 1 STATEMENT OF SIGNIFICANT ACCOUNTING POLICIES

The financial report is a general purpose financial report that has been prepared in accordance with Australian Accounting Standards and other mandatory professional reporting requirements. The financial report has also been prepared on an accruals basis and is based on historical costs and does not take into account changing money values or, except where stated, current valuations of non-current assets. Cost is based on the fair values of the consideration given in exchange for assets. The accounting policies have been consistently applied, unless otherwise stated.

The following is a summary of the material policies adopted by the entity in the preparation of the financial report.

#### **Basis of Consolidation**

The consolidated financial statements comprise the financial statements of the Group which includes Men of the Trees Inc. and Carbon Neutral Limited a company over which Men of The Trees Inc. exerts significant influence.

The financial statements of the subsidiary have been prepared using consistent accounting policies and adjustments are made to bring into line any dissimilar accounting policies that may exist.

In preparing the consolidated financial statements, all intercompany balances and transactions, income and expenses and profit and losses resulting from intra-group transactions have been eliminated.

#### **Inventories**

Inventories are measured at the lower of cost and net realisable value. Costs are assigned on a first in first out basis and include direct materials.

#### **Land Held for Sale**

Land held for sale represents agricultural land on which trees have been planted. Last financial year Carbon Neutral Limited purchased and impaired land at Boxwood Hill based on less land being available for agricultural purposes. In the current year, two more properties were purchased at Katanning and Cranbrook. The Directors of Carbon Neutral Limited believe that a similar impairment is not required because the land should not be classified as agricultural and it is reasonable to expect recovery of the purchase price upon sale of the land based on the attraction of trees to the 'green lifestyle' market.

#### **Investments and Financial Assets**

Investments and financial assets are initially recognised on the cost basis, including acquisition charges associated with the financial asset. The carrying amounts of financial assets are reviewed annually by the directors. The expected net cash flows from investments have not been discounted to their present value in determining the recoverable amounts, unless otherwise stated. Financial assets at fair value through profit or loss are financial assets held for trading. A financial asset is classified in this category if acquired principally for the purpose of selling in the short term.

#### **Property, Plant and Equipment**

Property, plant and equipment are brought to account at cost or at independent or director's valuation, less where applicable any accumulated depreciation or amortisation. The carrying amount of fixed assets is reviewed annually to ensure it is not in excess of the recoverable amount of these assets. The recoverable amount is assessed on the basis of expected net cash flows which will be received from the assets employment and subsequent disposal. The expected net cash flows have not been discounted to their present values in determining the recoverable amounts.

The depreciable amount of all fixed assets including buildings and capitalised leased assets, but excluding freehold land, are depreciated on a straight line basis over the useful lives of the assets to the entity commencing from the time the asset is held ready for use. Properties held for investment purposes are not subject to a depreciation charge.

#### **Employee Entitlements**

Provision is made for the liability for employee entitlements arising from services rendered by employees to balance date. Employee entitlements expected to be settled within one period together with entitlements arising from wages and salaries, annual leave and sick leave which will be settled after one period, have been measured at their nominal amount. Other employee entitlements payable later than one period have also been measured at their nominal value.

Contributions are made by the entity to employee superannuation funds and are charged as expenses when incurred. The entity has no legal obligation to provide benefits to employees on retirement.

## MEN OF THE TREES (INC.)

### NOTES TO AND FORMING PART OF THE FINANCIAL STATEMENTS FOR THE PERIOD ENDED 30<sup>TH</sup> SEPTEMBER 2011

	Men of the Trees Inc		Consolidated	
	2011	2010	2011	2010
	\$	\$	\$	\$
<b>2 GRANTS RECEIVED</b>				
The following grants have been received during the current period:				
City of Swan	-	1,000	-	1,000
Dept of Education, Employment & Workplace	-	528,421	-	528,421
Dept of Environment & Conservation	40,000	18,698	40,000	18,698
Australian Government Grants to Voluntary Environment and Heritage Organisations (GVEHO) Program	-	4,500	-	4,500
Healthway	-	4,000	-	4,000
Lotterywest	36,959	58,581	36,959	58,581
Growing Communities WA	-	5,500	-	5,500
Western Australian Community Foundation	-	568	-	568
Wheatbelt Natural Resource Management	15,000	-	15,000	-
	91,959	620,450	91,959	620,450
Grants not expended and for which a liability exists at balance date have been reflected in unearned income and are not shown as current income.				
<b>3 CASH &amp; CASH EQUIVALENTS</b>				
Cash on Hand	2,924	3,615	2,924	3,815
Cash on Deposit				
St Barbe Grove Account	133,855	180,211	133,855	180,211
Administration	7,617	7,223	7,617	7,223
Nursery	37,296	35,247	37,296	35,247
Rockingham	39,308	36,611	39,308	36,611
Peel	42,265	39,926	42,265	39,926
	260,341	299,218	260,341	299,218
Cash at Bank				
Life Membership	480	775	480	775
St Barbe Grove Account	197,634	445,205	197,634	445,205
Public Environment Gift Fund	40,409	55,760	40,409	55,760
Carbon Neutral Limited	-	-	190,038	589,972
	238,523	501,740	428,561	1,094,712
	501,788	804,573	691,826	1,394,745
<b>4 RECEIVABLES</b>				
<b>CURRENT</b>				
Sundry Debtors & Prepayments	396,876	259,795	456,603	396,971
GST & PAYG Payable	-	-	31,429	-
	396,876	259,795	488,032	396,971
<b>5 INVENTORIES</b>				
<b>CURRENT</b>				
Stock on Hand	9,958	36,473	9,958	36,473
Greenhouse Friendly Voluntary Emission Reductions	-	-	14,869	4,057
	9,958	36,473	24,827	40,530

**MEN OF THE TREES (INC.)**

**NOTES TO AND FORMING PART OF THE FINANCIAL STATEMENTS  
FOR THE PERIOD ENDED 30<sup>TH</sup> SEPTEMBER 2011**

	<b>Men of the Trees Inc</b>		<b>Consolidated</b>	
	<b>2011</b>	<b>2010</b>	<b>2011</b>	<b>2010</b>
	<b>\$</b>	<b>\$</b>	<b>\$</b>	<b>\$</b>
<b>6 PROPERTY, PLANT AND EQUIPMENT</b>				
Buildings	817,376	817,376	817,376	817,376
Less: Accumulated Depreciation	166,271	125,422	166,271	125,422
	<u>651,105</u>	<u>691,954</u>	<u>651,105</u>	<u>691,954</u>
Plant & Equipment	368,776	358,578	431,648	421,450
Less: Accumulated Depreciation	244,562	215,486	302,154	256,072
	<u>124,214</u>	<u>143,092</u>	<u>129,494</u>	<u>165,378</u>
Motor Vehicle	44,183	33,131	44,183	33,131
Less: Accumulated Depreciation	21,556	17,143	21,556	17,143
	<u>22,627</u>	<u>15,988</u>	<u>22,627</u>	<u>15,988</u>
Office Furniture & Equipment	150,239	148,739	154,339	152,839
Less: Accumulated Depreciation	139,671	131,200	142,131	132,430
	<u>10,568</u>	<u>17,539</u>	<u>12,208</u>	<u>20,409</u>
Library & Reference Books	1,495	1,495	1,495	1,495
Less: Accumulated Depreciation	1,495	1,495	1,495	1,495
	<u>-</u>	<u>-</u>	<u>-</u>	<u>-</u>
<b>Total property, plant &amp; equipment</b>	<u><u>808,514</u></u>	<u><u>868,573</u></u>	<u><u>815,434</u></u>	<u><u>893,729</u></u>
<b>7 CREDITORS &amp; BORROWINGS</b>				
<b>CURRENT</b>				
Sundry Creditors & Accruals	19,224	9,165	78,924	334,747
Unearned Income	15,000	-	15,000	50,986
GST & PAYG Payable	110,233	31,677	159,822	54,614
Superannuation Payable	8,171	6,591	8,171	19,478
	<u>152,628</u>	<u>47,433</u>	<u>261,917</u>	<u>459,825</u>
<b>NON-CURRENT</b>				
Life Membership Subscriptions	40,974	40,974	40,974	40,974
Less Accumulated Amortisation	28,181	26,132	28,181	26,132
	<u>12,793</u>	<u>14,842</u>	<u>12,793</u>	<u>14,842</u>
Landowner Incentives	-	-	79,670	216,588
	<u>12,793</u>	<u>14,842</u>	<u>92,463</u>	<u>231,430</u>
<b>8 PROVISIONS</b>				
<b>CURRENT</b>				
Provision for Annual Leave	27,023	39,320	58,490	80,905
	<u>27,023</u>	<u>39,320</u>	<u>58,490</u>	<u>80,905</u>
<b>NON-CURRENT</b>				
Provision for Long Service Leave	27,367	34,769	27,367	3,769
	<u>27,367</u>	<u>34,769</u>	<u>27,367</u>	<u>3,769</u>

**MEN OF THE TREES (INC.)**

**NOTES TO AND FORMING PART OF THE FINANCIAL STATEMENTS  
FOR THE PERIOD ENDED 30<sup>TH</sup> SEPTEMBER 2011**

	Men of the Trees Inc		Consolidated	
	2011	2010	2011	2010
	\$	\$	\$	\$

**9 RECLASSIFICATION ADJUSTMENT**

Carbon Neutral Limited revisited the treatment of planting related accruals and incentives raised in the 2009 financial statements. The Directors of Carbon Neutral Limited agreed that in most cases, there was no present obligation at year end and raising an accrual was being overly cautious. As a result, the opening balances of these accruals were adjusted and are shown as an adjustment in the consolidated Members' Funds section of the Statement of Financial Position.

**RECLASSIFICATION ADJUSTMENT**

Reclassification of Accrued Planting Liability	-	-	-	148,472
Reclassification of Accrued Infilling Liability	-	-	-	346,422
Reclassification of Accrued Conventions, Caveats & Surveys	-	-	-	120,073
Reclassification of Trees Inventory	-	-	-	(48,629)
Reclassification of Landowner Incentives Liability	-	-	-	252,123
Total Reclassification Adjustment	—	—	—	818,461

**10 CONTINGENT ASSETS AND LIABILITIES**

The directors of Carbon Neutral Limited believe that accruals are not required for the following items, as it is less than 50% probable that a future sacrifice of economic benefit will be required. There is uncertainty as to the survival rates of recent planting sites and information on recent plantings (winter of 2011) are not available until much later in the year. The possible amount payable are as follows:

	Within 1 Year	1 to 2 Years	2 to 5 Years
Conventions, Caveats & Surveys	23,986	23,986	71,028
Monitoring	24,460	5,800	-
Landowner Incentives	20,803	-	234,461
	69,249	29,786	305,489

**MEN OF THE TREES (INC.)**

**COMMITTEE'S DECLARATION**

In the opinion of the committee, the accompanying accounts as set out on pages

- (a) Present fairly the financial position of Men of the Trees (Inc) and the consolidated entry as at 30 September 2011 and the results and cash flows of the association and the consolidated entity for the period ended on that date in accordance with the accounting policies as stated in Note 1 to the accounts
- (b) At the date of this statement there are reasonable grounds to believe that the Men of the Trees (Inc) will be able to pay its debts as and when they fall due.

This statement is made in accordance with a resolution of the Committee and is signed for and on behalf of the Committee by:

President   
Date: January 2012

Treasurer 

# Men of the Trees Inc.

## Administration Centre (Admin)

St Barbe Grove  
Lot 2 Stirling Crescent (Cnr Amherst Road),  
Hazelmere WA 6055  
PO Box 103 Guildford WA 6935  
Tel: (61 8) 9250 1888  
Fax: (61 8) 9250 2735  
Email: [contact@menofthetrees.com.au](mailto:contact@menofthetrees.com.au)  
Web: [www.menofthetrees.com.au](http://www.menofthetrees.com.au)

## Bowra and O'Dea Memorial Groves (MG)

St Barbe Grove  
Tel: 9250 1888

## Farm Tree Help Scheme (FTHS)

St Barbe Grove  
Tel: 9250 3113

## Million Trees Program (MTP) Hazelmere

St Barbe Grove  
Tel: 9250 1888

## Peel Branch (Peel)

PO Box 802, Mandurah 6210  
Tel: 9535 3918

## Perth City Farm (PCF)

1 City Farm Place  
East Perth WA 6004  
PO Box 6065, East Perth 6892  
Tel: 9325 7229  
Fax: 9325 7210  
Email: [info@cityfarmperth.org.au](mailto:info@cityfarmperth.org.au)  
Web: [www.cityfarmperth.org.au](http://www.cityfarmperth.org.au)

## Revegetation Team (RVT)

St Barbe Grove  
Tel: 9274 4842  
Fax: 9250 2735  
Email: [mottplanting@iinet.net.au](mailto:mottplanting@iinet.net.au)

## Rockingham / Kwinana Nursery (RKN)

Rockingham Golf Course  
Elanora Drive, Cooloongup WA 6168  
PO Box 5091, Rockingham Beach 6969  
Tel: 9527 3142  
Fax: 9528 2090  
Email: [rockingham@menofthetrees.com.au](mailto:rockingham@menofthetrees.com.au)

## St Barbe Grove Nursery (SBGN)

St Barbe Grove  
Tel: 9250 4493  
Fax: 9528 2735  
Email: [mottnursery@iinet.net.au](mailto:mottnursery@iinet.net.au)

## Tree Farm Project (TFP)

Contact: St Barbe Grove  
Activity bases: Amery Acres, SBG, Nambling  
Tel: 9250 1888

## Whiteman Park Children's Forest (CHF)

St Barbe Grove  
Tel: 9250 1888

## Affiliate

### Carbon Neutral Ltd

4/9 Cleaver St West Perth  
Western Australia 6005  
T 1300 851 211  
F 9200 4425  
E [contact@carbonneutral.com.au](mailto:contact@carbonneutral.com.au)  
W [www.carbonneutral.com.au](http://www.carbonneutral.com.au)





# **BOWRA & O'DEA**

FUNERAL DIRECTORS

Bowra & O'Dea has sponsored the growing, planting and aftercare of over 2 million trees over the past 15 years through the Bowra & O'Dea Memorial Groves and Million Trees Program.

This year Men of the Trees has passed the 13 million trees planted milestone for all of its group planting programs.  
Thank you to all who have made this possible.